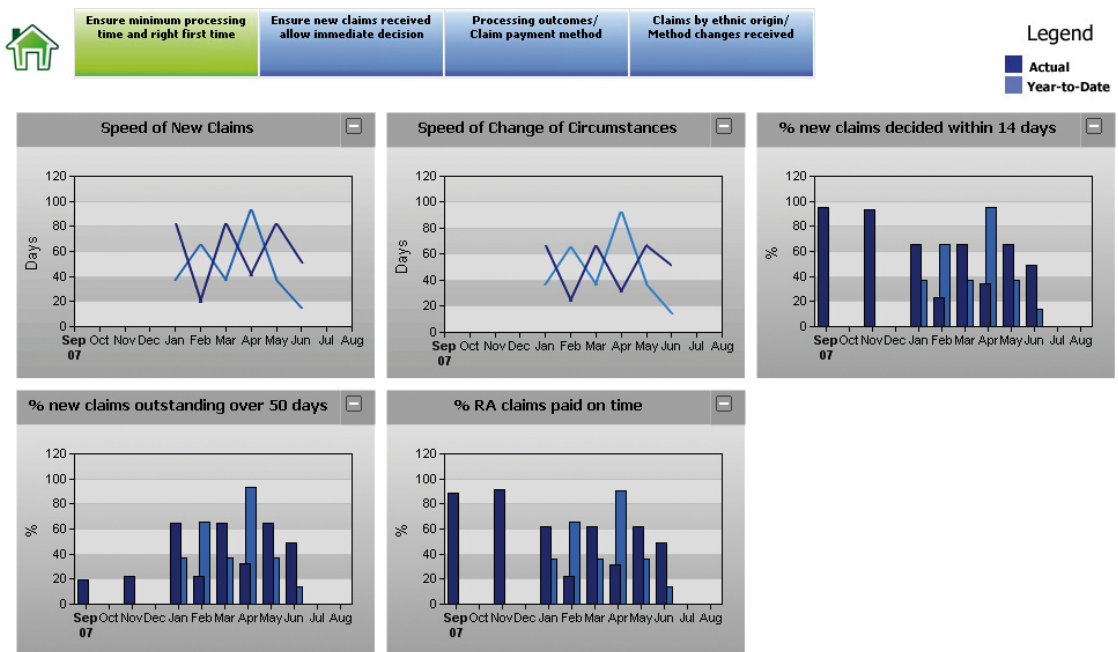




## Bridge Plus

### Management information available at your fingertips

SunGard has now developed Bridge Plus to further assist Local Authorities and reduce the burden of collating and reporting performance information to allow you to concentrate on managing and improving performance.



### Features include

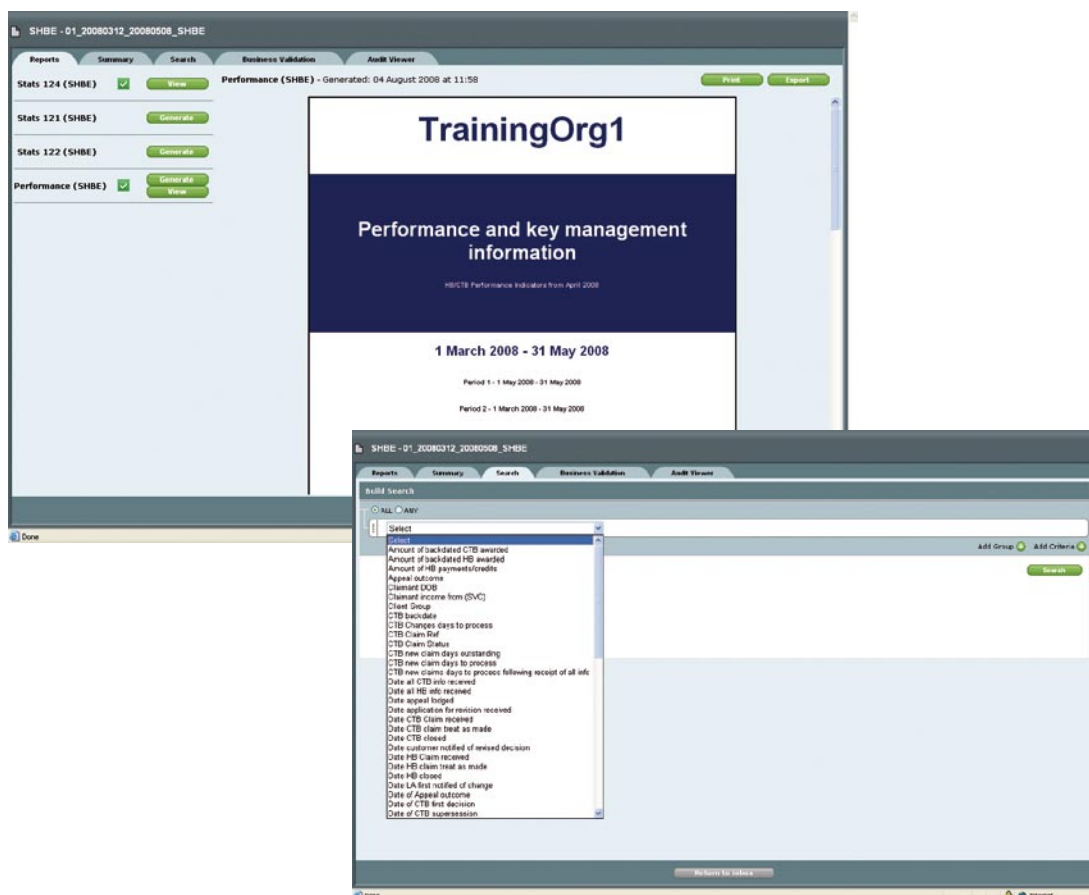
- 100% automated framework
- 6 key scorecard areas
- DWP Indicators - 4 measures
- Claims Processing - 60 measures
- Overpayments - 87 measures
- Appeals - 9 measures
- Fraud and error - 36 measures
- Client/ Tenure type - 54 measures
- 4 Dashboard reports based around the 6 main scorecard areas

## Bridge

SunGard Public Sector's Bridge product enables Local Authorities (LAs) to calculate Performance Management information across multiple SHBE extracts; monthly, quarterly, annually and Year to date.

### Features include

- The generation of 121,122,124 and SHBE Performance reports (in accordance with Circular A2/2008)
- Ability to search across the Single Housing Benefit Extract to identify exceptions and anomalies
- Validation as to the accuracy of the SHBE file
- Ability to edit information held within the SHBE and capture these amendments in a comprehensive audit log
- Secure transmission



If you would like to hear more about Intercept please contact  
**SunGard Public Sector Support team 0845 3300747**  
or email [ContactUs@sungardps.com](mailto:ContactUs@sungardps.com)